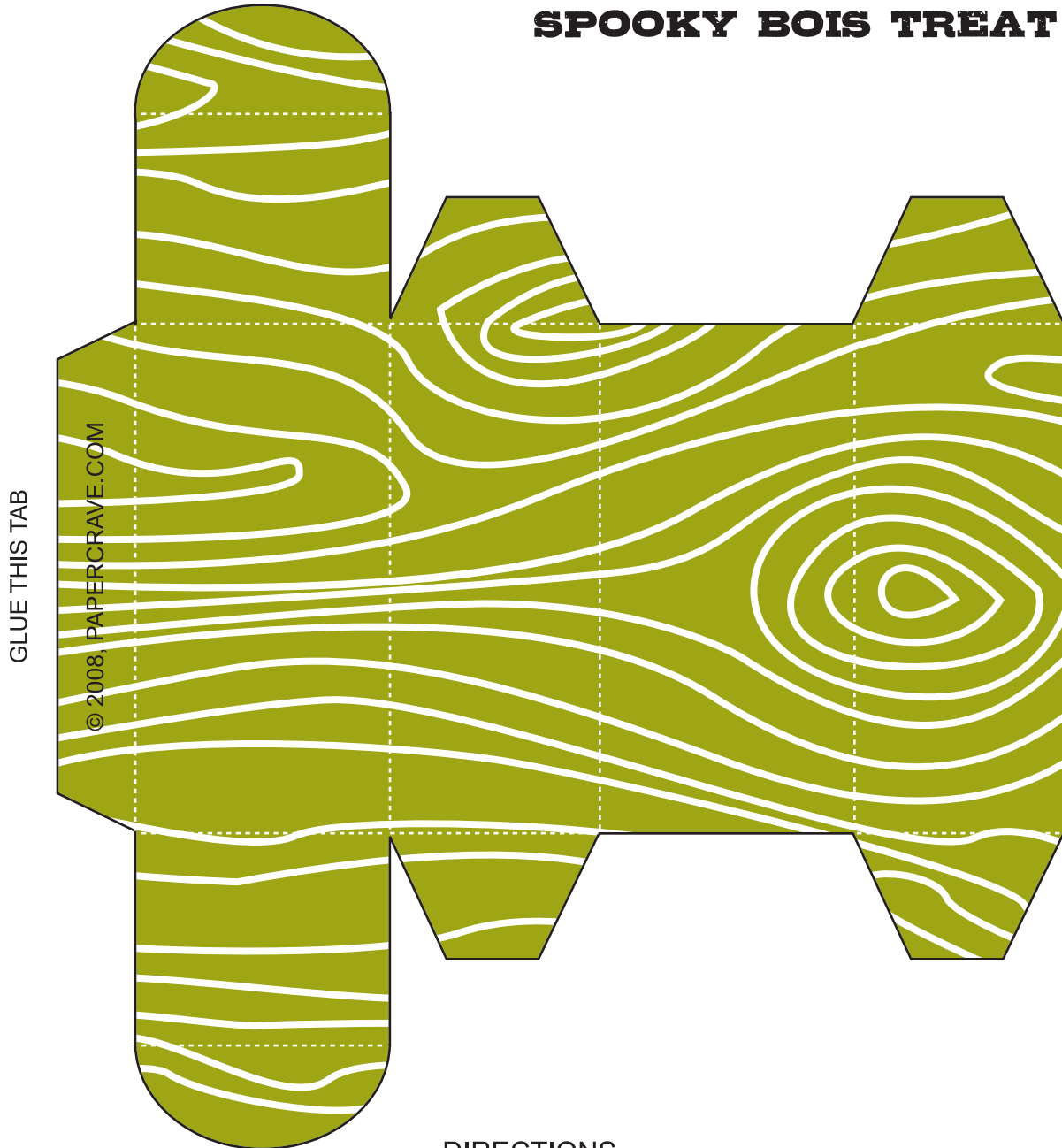


SPOOKY BOIS TREAT BOX



DIRECTIONS

Print the box template on cardstock and cut out along the solid black lines. Fold along white dotted lines and glue tab with glue or a glue stick. You may also want to glue the bottom flap closed for more stability. Add candy etc. and decorate with accompanying stickers.

© 2008, Paper Crave. For personal use only.

HAPPY HALLOWEEN FROM PAPER CRAVE!

